

# The 131st Shrewsbury Flower Show

10th and 11th August 2018

## Children's Classes

in the

## Bees, Honey and Wine Section

Please use the separate entry form  
inside this schedule



There are four  
new classes  
this year – two  
in each age  
group



**Entry fee - 50p** regardless of the number of entries.

Each junior exhibitor will be given a Junior Exhibitor Badge. A junior exhibitor will also receive *one chaperone ticket* to allow free entry for an accompanying adult on either the Friday or Saturday, providing the adult is not an exhibitor. Only one chaperone ticket will be issued per family.

The "GILLIAN COPPIN" MEMORIAL TROPHY  
will be awarded to the entrant who achieves the highest total of points in  
the Junior classes.

## Junior classes are divided into two age groups.

- less than 11 years of age on 1<sup>st</sup> August 2018
- from 11 to 16 years of age on 1<sup>st</sup> August 2018

**Young people attempting the Honey Sandwich Cake and Honey Biscuit recipes should be supervised by a responsible person at all times.**

**701 Artwork in any form** – less than 11 years of age on 1<sup>st</sup> August 2018

**702 Artwork in any form** - from 11 to 16 years of age on 1<sup>st</sup> August 2018

Illustrating the use of Honey and/or Wine.

A drawing, painting, or model with an area and height no larger than **40 cm x 40 cm x 40 cm.**

**1<sup>st</sup> £10      2<sup>nd</sup> £7      3<sup>rd</sup> £5**

**711 Honey Sandwich Cake** - less than 11 years of age on 1<sup>st</sup> August 2018

**712 Honey Sandwich Cake** - from 11 to 16 years of age on 1<sup>st</sup> August 2018

### Recipe

170g margarine  
110g caster sugar  
1 tablespoon of honey  
3 large eggs  
170g self raising flour and a pinch of salt



### Method

- Cream the margarine with sugar and honey until light and fluffy,
- Whisk eggs and beat into creamed mixture.
- Fold in sifted flour and salt.
- Divide mixture into two prepared 18-21 cm round tins and bake in a moderate oven, gas mark 4, 170 °C for about 30 minutes.
- Turn on to a wire tray and when cold, sandwich together with the following ingredients mixed as a filling: 50g butter, 80g icing sugar and 1 tablespoon of honey

**1<sup>st</sup> £6      2<sup>nd</sup> £4      3<sup>rd</sup> £3**

**NEW  
THIS  
YEAR**

**751 Honey Jar Label** - less than 11 years of age on 1<sup>st</sup> August 2018

**752 Honey Jar Label** - from 11 to 16 years of age on 1<sup>st</sup> August 2018

A design for a honey jar label for honey offered for sale.

The design to be on **A4 landscape**-sized paper, does not need to comply with any legislation. The winning entries will be adapted by Shropshire Beekeepers and used on honey sold at the show in 2019.

**1<sup>st</sup> £10      2<sup>nd</sup> £7      3<sup>rd</sup> £5**

**721 Honey Biscuits** - less than 11 years of age on 1<sup>st</sup> August 2018

**722 Honey Biscuits** - from 11 to 16 years on 1<sup>st</sup> August 2018

**Recipe**

- 50g plain flour
- 1 tablespoon of honey
- 50g of granulated sugar
- 50g butter
- 80g porridge oats (rolled oats)
- Half a teaspoon Bicarbonate of Soda



**Method:**

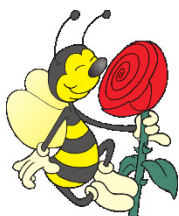
- Put the honey and butter in a basin and melt in a microwave oven.
- Take the basin out of the microwave and add the bicarbonate of soda.
- Blend the flour, oats and sugar in another bowl and then mix them with the honey/butter mixture and allow to cool.
- Divide the mixture into 12 walnut sized balls and place on a greased baking tray (not too close together). Flatten them slightly.
- Bake at gas mark 3, 160 °C for about 15 minutes. The finished appearance will look more like cookies than conventional biscuits.

**Please exhibit 6 biscuits from the 12 produced.**

**1<sup>st</sup> £6      2<sup>nd</sup> £4      3<sup>rd</sup> £3**

**731 Bee Pasture** - less than 11 years of age on 1<sup>st</sup> August 2018

**732 Bee Pasture** - from 11 to 16 years on 1<sup>st</sup> August 2018



An arrangement of common, **NOT RARE**, flowers (and their foliage and fruit) from which the honey bee gathers nectar and pollen, arranged in a **TWO LITRE** ice cream carton. The exhibit will be judged on its artistic merit and relevance to beekeeping, **NOT** on the number of species present.

**1<sup>st</sup> £10      2<sup>nd</sup> £7      3<sup>rd</sup> £5**

**NEW  
THIS  
YEAR**

**761 Mobile** - less than 11 years of age on 1<sup>st</sup> August 2018

**762 Mobile** - from 11 to 16 years on 1<sup>st</sup> August 2018

A hanging mobile with a 'bees and honey' theme.

Hanging drop no greater than **75 cm** and overall diameter **40 cm**.

Fixtures for hanging the mobile will be provided when staging.

**1<sup>st</sup> £10      2<sup>nd</sup> £7      3<sup>rd</sup> £5**

**741 Photography** - less than 11 years of age on 1<sup>st</sup> August 2018

**742 Photography** - from 11 to 16 years on 1<sup>st</sup> August 2018

Photographs up to A4 size and mounted on plain card of any single colour, of any subject relating to Beekeeping or Winemaking. The mount may project beyond the photograph by up to 2 cm at each edge. The photograph should not contain any additional decoration at its edges. Any unprinted/unprocessed margin on the photograph should be removed.



1<sup>st</sup> £10

2<sup>nd</sup> £6

3<sup>rd</sup> £4

### **Delivery and Staging of exhibits.**

All exhibits must be delivered to the Show Tent (the Severn Marquee) on the day before the Show (Thursday, 9<sup>th</sup> August 2018) for **staging from 2.00 pm onwards and to be completed by 8.30 pm**. The tent is closed to Exhibitors after this time until judging is complete.

**DATE OF BIRTH LABELS WILL BE SUPPLIED WHEN STAGING. THESE MUST BE FIXED TO ALL ENTRIES.**

**Plates, doilies and polythene bags will be supplied, when staging, for classes 711, 712, 721, 722**

Judging will take place from 9.00 pm on Thursday evening and on Friday morning.

**On Saturday, please collect exhibits between 6.30 and 7.30 pm. To ensure the security of your exhibit please bring the letter containing your entry number(s) so that it can be shown to a Steward.**

**ANY EXHIBIT REMAINING AFTER 7.30 PM WILL BE DISPOSED OF.**

**Trophies must be returned to the General Secretary by 1<sup>st</sup> August in the year following the Show or as otherwise notified.**



**DOGS ARE NOT ALLOWED ON THE SHOWGROUND  
(EXCEPT ASSISTANCE DOGS)**